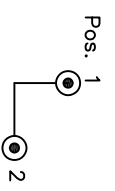
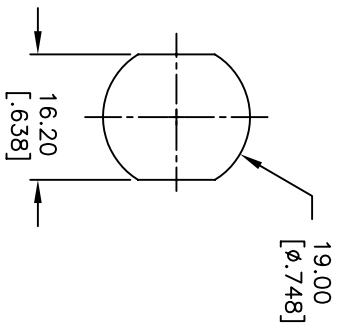


- NOTES:
1. ALL DIMENSIONS IN MM [INCH]
 2. GENERAL TOLERANCE: 0.0=±0.4
0.00=±0.25
 3. TERM. NOS. FOR REF. ONLY
 4. CONTACT RATING: 4A @125VAC/28VDC, 2A @250VAC
 5. CONTACT RESISTANCE: 10 milliohms Typical
 6. DIELECTRIC STRENGTH: 1,500VAC for 1 min.
 7. ELECTRICAL LIFE: 10,000 make-and-break cycles at full load.
 8. KEYS: Nickel plated with code no. A126 (2 Keys)
 9. ELECTROSTATIC DISCHARGE (ESD) RESISTANCE: 15KV DC min. @SEA LEVEL; Bushing to terminals

RECOMMEND PANEL LAYOUT



Key Pull: Pos. 1,2
CIRCUIT: SP (90° INDEXING)
CONTACT CONFIGURATION

SWITCH FUNCTION	
CONNECTED TERMINAL #	POS. 2
POS. 1	POS. 2
8-1	1-3
ON	ON

REV.	ECN No.	DESCRIPTION	DATE	CHKD
A	15645	RELEASED FOR PRODUCTION	1/10/06	PH

TITLE		SCALE	DATE	DR	DWG	REV
KD130RA126ANTISTATIC		1.5:1	1/10/06	PH	K200268	A



THE INFORMATION CONTAINED IN THIS DOCUMENT IS PROPRIETARY TO E-SWITCH AND IS NOT TO BE COPIED OR TRANSFERRED